

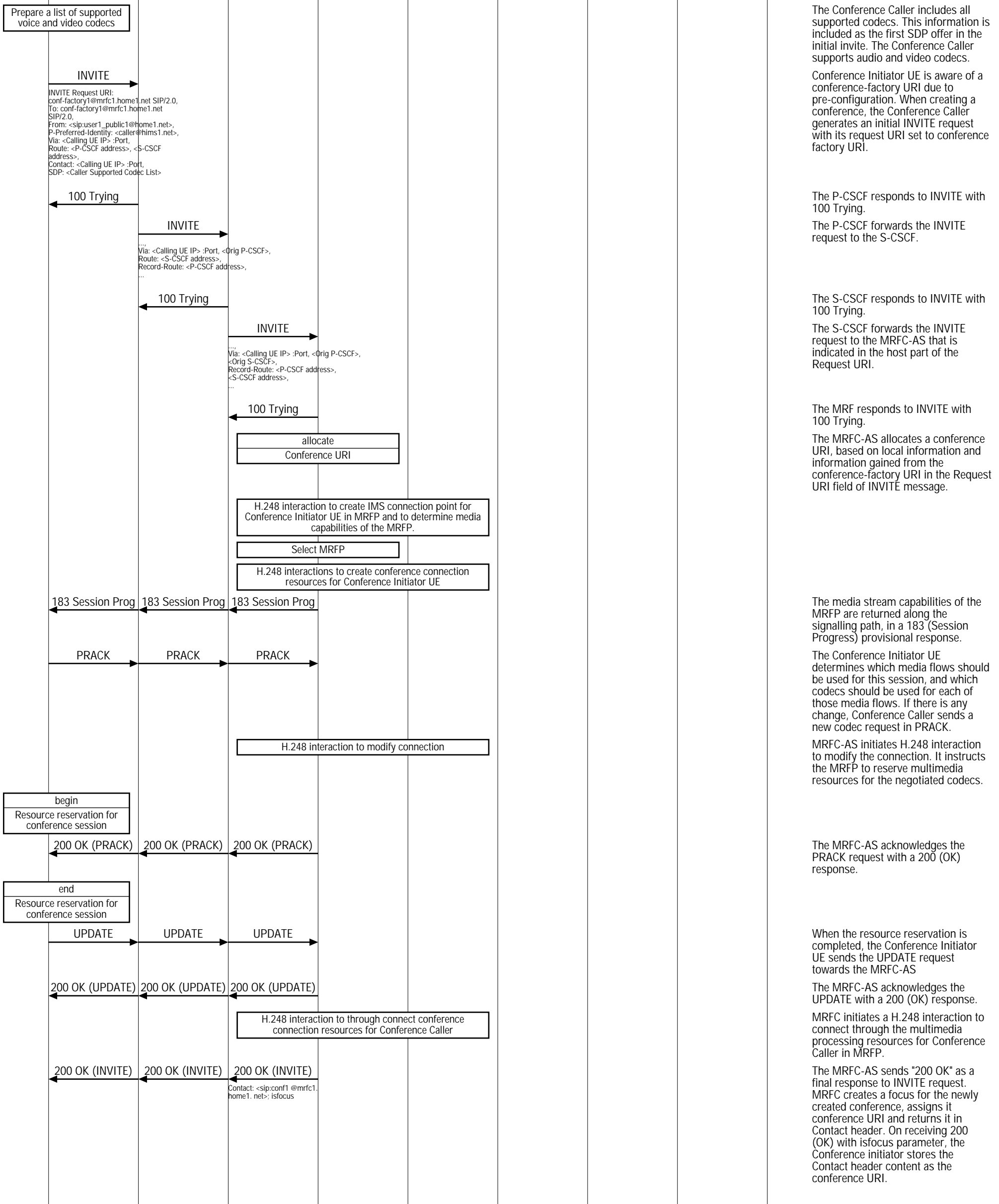
IMS Conference (IMS Conference Call)								
Calling UE	IMS Network						Called UE	EventStudio System Designer 4.0  18-May-08 10:41 (Page 1)
Caller User Equipment	IMS 1		IMS 1 MRF		IMS 2		Called User Equipment	
Conference Initiator	Initiating P-CSCF	Initiating S-CSCF	MRFC-AS	MRFP	Participating I-CSCF	Participating S-CSCF	Participating P-CSCF	

This sequence diagram was generated with EventStudio System Designer 4.0 (<http://www.EventHelix.com/EventStudio>). Copyright © 2008 EventHelix.com Inc. All Rights Reserved. The EventStudio source files for this document can be downloaded from <http://www.eventhelix.com/call-flow/ims-conference.zip>.

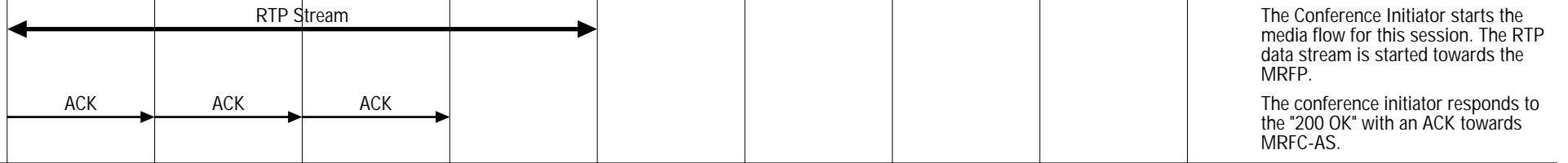
This sequence diagram shows an IMS user creating a conference by using a conference-factory URI. The conference is created at a MRFC-AS of the users home network. The steps involved in the conference scenario covered here are:

- (1) The conference initiator UE uses the conference factory URI to initiate a conference with the MRFC-AS (Multimedia Resource Function Control/Application Server).
- (2) The MRFC-AS assigns a conference URI to the conference and configures the MRFP (Multimedia Resource Function Processor).
- (3) The conference call is setup and the RTP data begins flowing between the conference initiating UE and the MRFP.
- (4) The conference initiator then uses the refer procedure to add more users to the conference. The new users establish a call to the conference URI passed in the refer message.
- (5) When the conference is in progress, RTP media streams are being mixed and propagated to all the participants.
- (6) The conference user drops out of the conference. All users are notified for this exit from the conference.

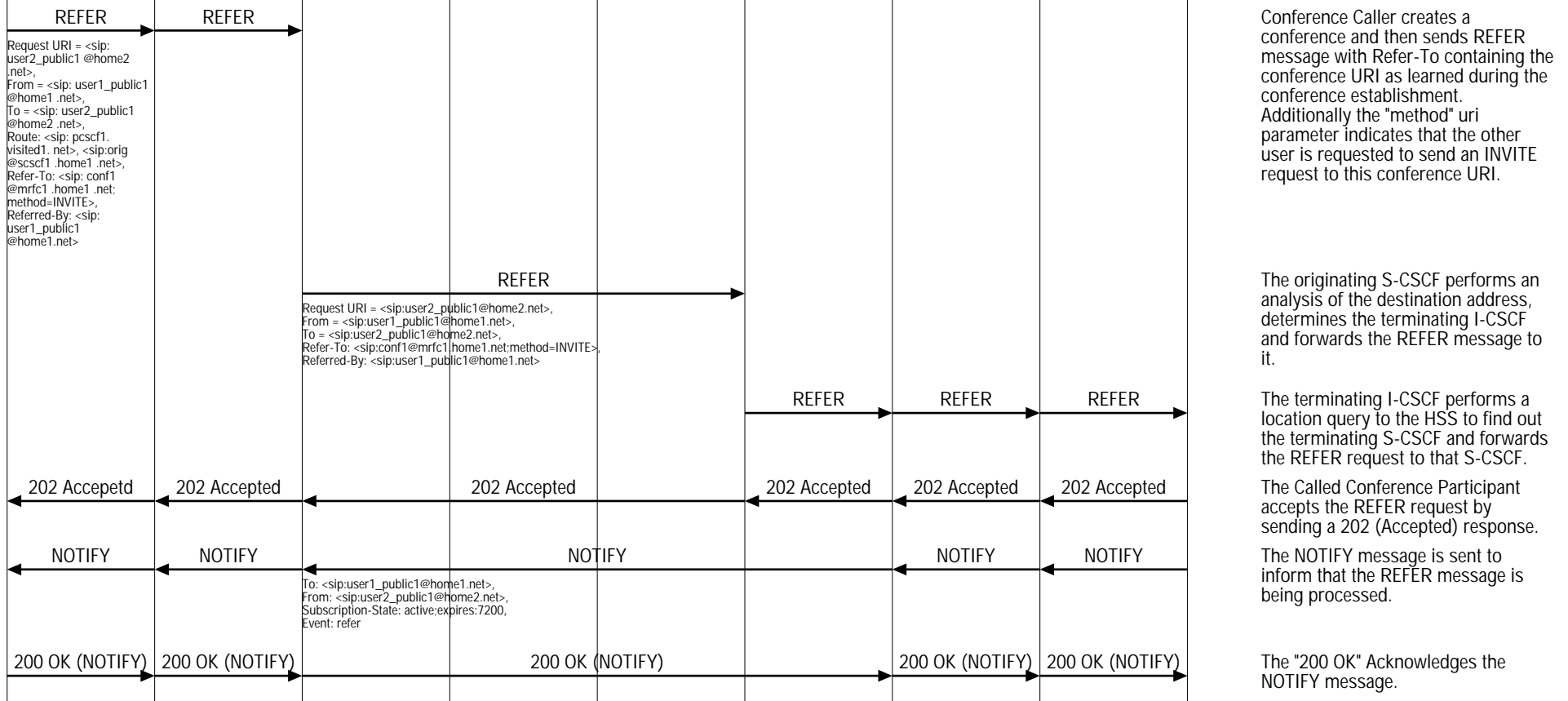
### Initiating an IMS conference using the Conference Factory URI



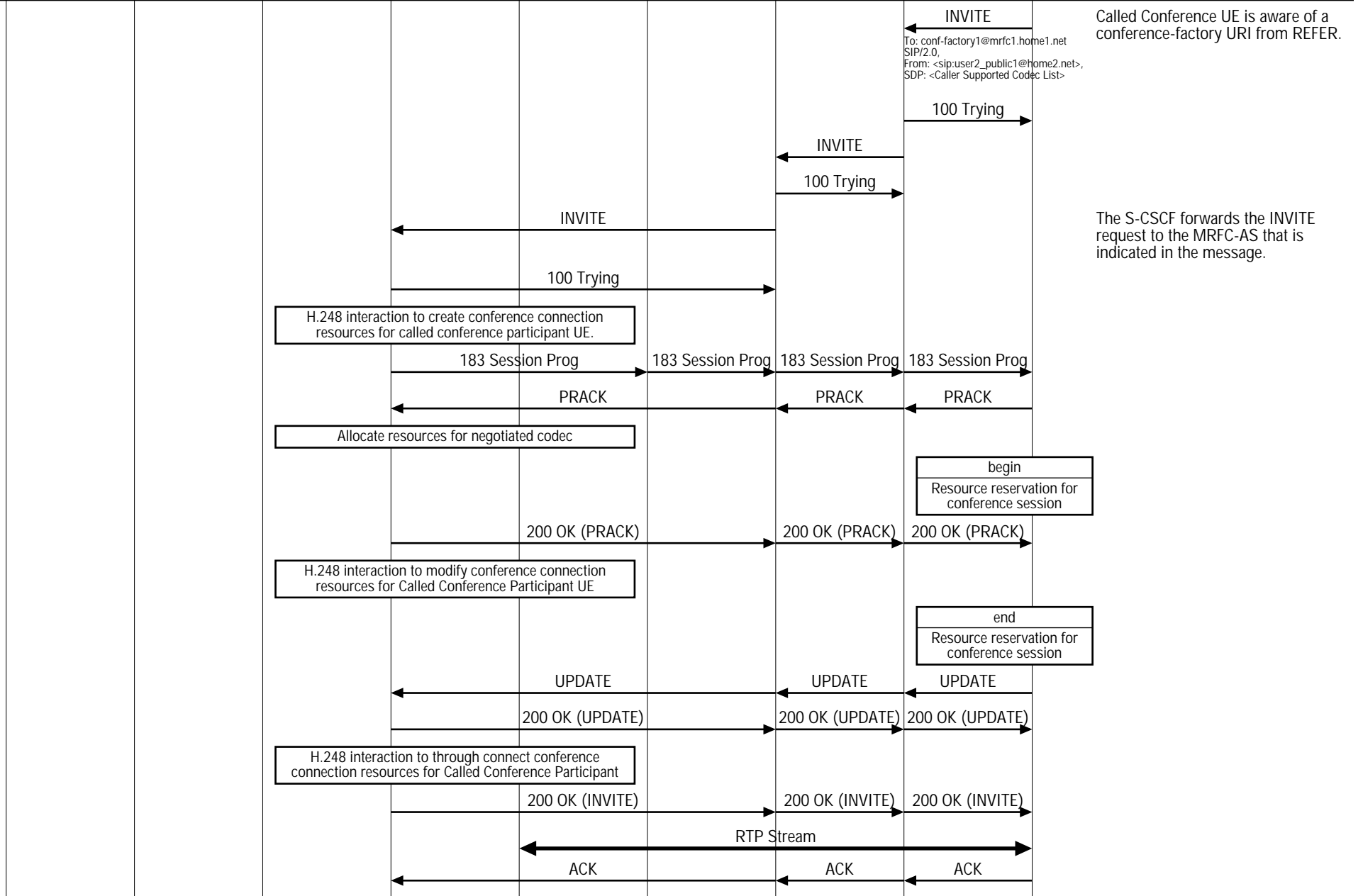
IMS Conference (IMS Conference Call)								
Calling UE	IMS Network						Called UE	EventStudio System Designer 4.0 18-May-08 10:41 (Page 2)
Caller User Equipment	IMS 1		IMS 1 MRF		IMS 2		Called User Equipment	
Conference Initiator	Initiating P-CSCF	Initiating S-CSCF	MRFC-AS	MRFP	Participating I-CSCF	Participating S-CSCF	Participating P-CSCF	



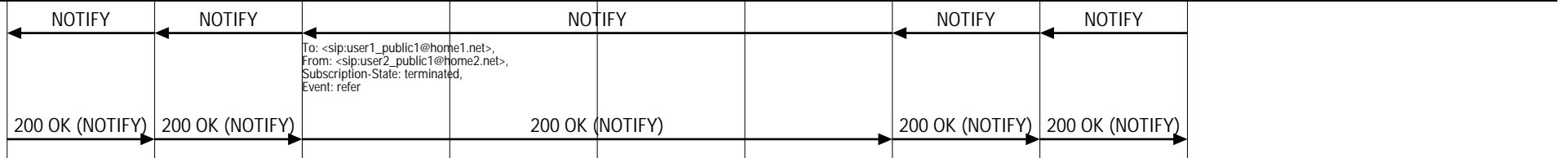
User inviting another user to a conference by sending a REFER request



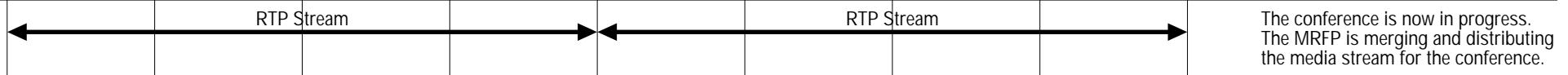
Called Conference Participant enters Conference



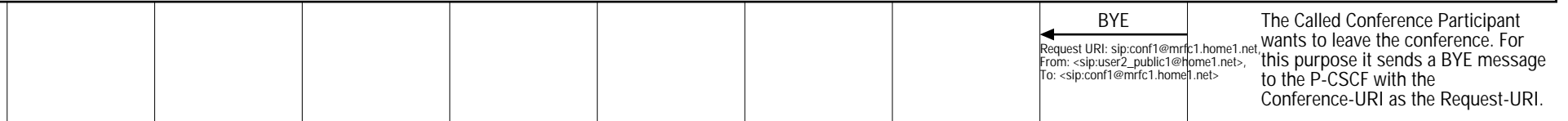
Notify Conference Initiator that the user has successfully entered the conference



Conference in progress



Conference Caller leaving the Conference



IMS Conference (IMS Conference Call)									
Calling UE	IMS Network							Called UE	EventStudio System Designer 4.0
Caller User Equipment	IMS 1		IMS 1 MRF		IMS 2			Called User Equipment	
Conference Initiator	Initiating P-CSCF	Initiating S-CSCF	MRFC-AS	MRFP	Participating I-CSCF	Participating S-CSCF	Participating P-CSCF	Conference Participant	18-May-08 10:41 (Page 3)

