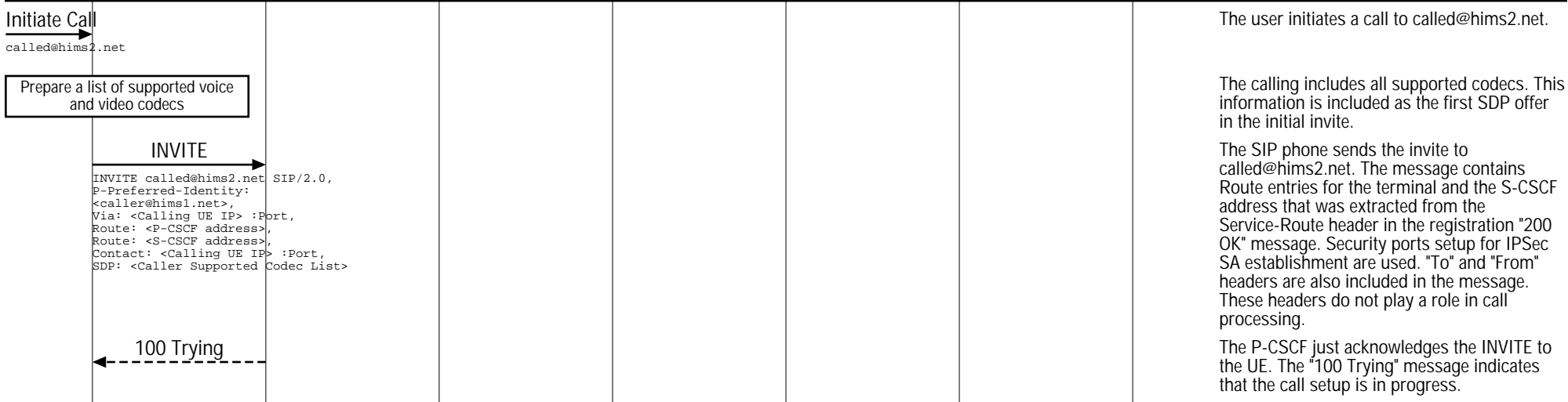
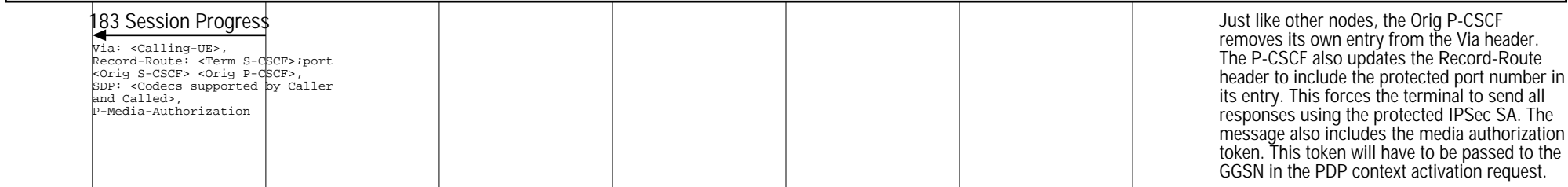


Caller Interfaces (Caller and Called are IMS Subscribers)						
Calling UE	IMS Network				Called UE	EventStudio System Designer 4.0
Caller User Equipment	Visited IMS 1	Home IMS 1	Home IMS 2		Called User Equipment	
Caller	Orig P-CSCF	Orig S-CSCF	Term I-CSCF	Term S-CSCF	Term P-CSCF	15-Dec-07 08:19 (Page 1)

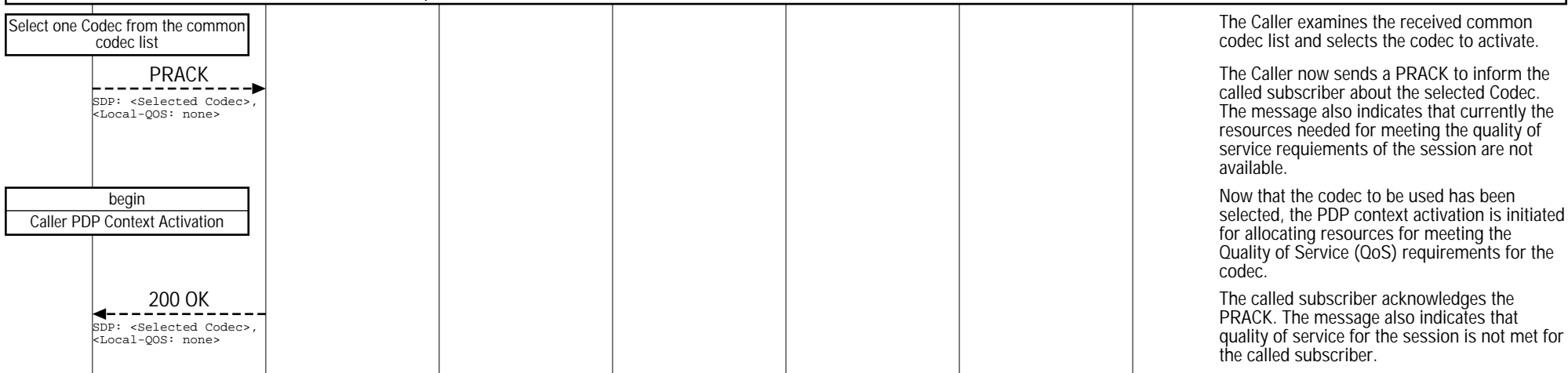
### IMS Routing of Initial SIP INVITE



### IMS Routing of First Response to the SIP Invite



### PDP Context Activation and Audio/Video Path Setup

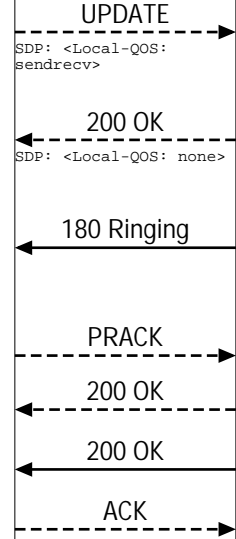


Caller Interfaces (Caller and Called are IMS Subscribers)						
Calling UE	IMS Network					Called UE
Caller User Equipment	Visited IMS 1	Home IMS 1	Home IMS 2			Called User Equipment
Caller	Orig P-CSCF	Orig S-CSCF	Term I-CSCF	Term S-CSCF	Term P-CSCF	Called

EventStudio System Designer 4.0

15-Dec-07 08:19 (Page 2)

end  
Caller PDP Context Activation



The caller PDP context activation has been completed.

Since the caller PDP context has been activated, notify the called end that the caller can now meet the quality of service in the send and receive direction.

The caller replies back to the called user. Note that the Local QoS is still set to none as the called PDP context activation has not been completed.

Inform the caller that the called subscriber is being rung. This serves as an implicit indication to the caller that the QoS at the called side has also been met.

The caller acknowledges the ringing message.

The called subscriber acknowledges the PRACK.

Notify the caller that that the call has been answered.

The caller acknowledges the "200 OK" message. The call is now ready to enter conversation mode.

Conversation on a direct RTP/RTCP connection between the caller and called subscriber SIP phones.