

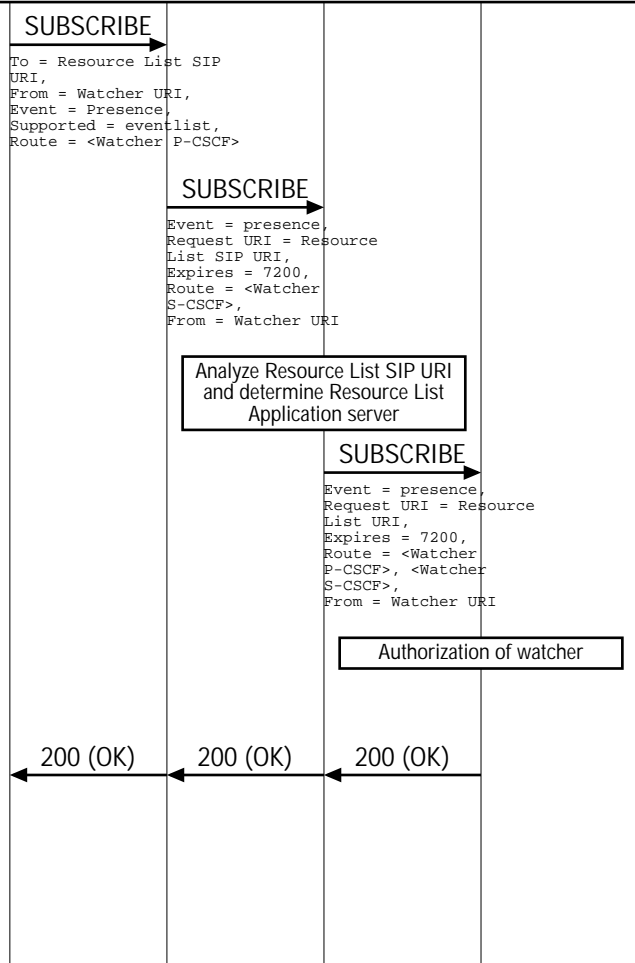
Presence feature subscribing to Resource List (IMS Presence Subscription to a Resource List)										
Watcher UE	Watcher IMS Network			Presentity IMS Networks						EventStudio System Designer 4.0
Watcher User Equipment	Watcher Visited Network	Watcher Home Network		Presentity1 Home Network			Presentity2 Home Network			
Watcher	Watcher P-CSCF	Watcher S-CSCF	Resource List Server	Presentity1 I-CSCF	Presentity1 S-CSCF	Presence Server 1	Presentity2 I-CSCF	Presentity2 S-CSCF	Presence Server 2	12-Apr-08 09:28 (Page 1)

This sequence diagram was generated with EventStudio System Designer 4.0 (<http://www.EventHelix.com/EventStudio>). Copyright © 2008 EventHelix.com Inc. All Rights Reserved. The EventStudio source files for this document can be downloaded from <http://www.eventhelix.com/call-flow/ims-presence-resource-list.zip>.

IP Multimedia Subsystem (IMS) provides a framework and building blocks for building advanced telecom services. One such service is network wide publication and subscription of presence information. Users can subscribe to presence information for their contacts. If the contact accepts their request, the subscriber will be registered for presence notification. Whenever the friend publishes presence information, the IMS presence framework will notify the subscribed users.

IMS presence information communication can put a lot of load on the network. One way to reduce this load is to predefine the list of friends and family. When you subscribe to the "friends and family" list, a Resource List Server (RLS) in the IMS subscribes to the individual subscribers (presentities) on your behalf. Once the RLS completes the registrations, it collates the individual presence status into a single NOTIFY message.

User subscribes to the Resource List Server (RLS)



To initiate a subscription to the RLS, the UE generates a SUBSCRIBE request indicating support for "eventlist", together with an indication of the length of time this periodic subscription should last.

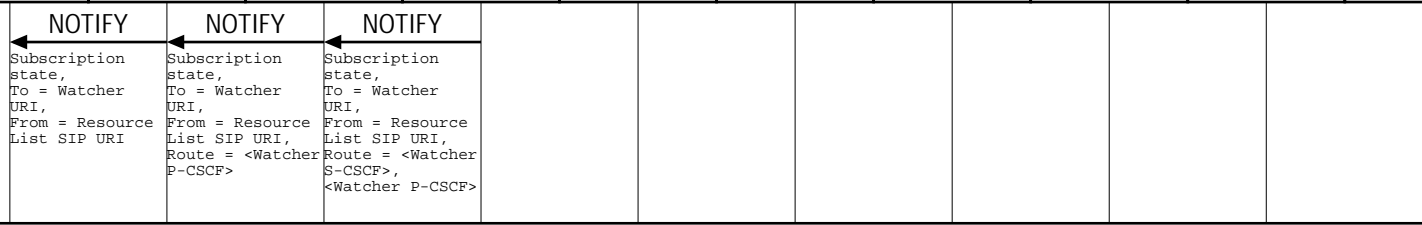
The P-CSCF looks up the serving network information for the Watcher's public user identity that was stored during the registration procedure. The SUBSCRIBE request is forwarded to S-CSCF.

Watcher S-CSCF performs an analysis of the Resource List SIP URI and forwards the SUBSCRIBE request directly to the Resource List's Application Server.

The Presence Server (PS) performs the necessary authorization checks on the Watcher to ensure it is allowed to watch the Resource List.

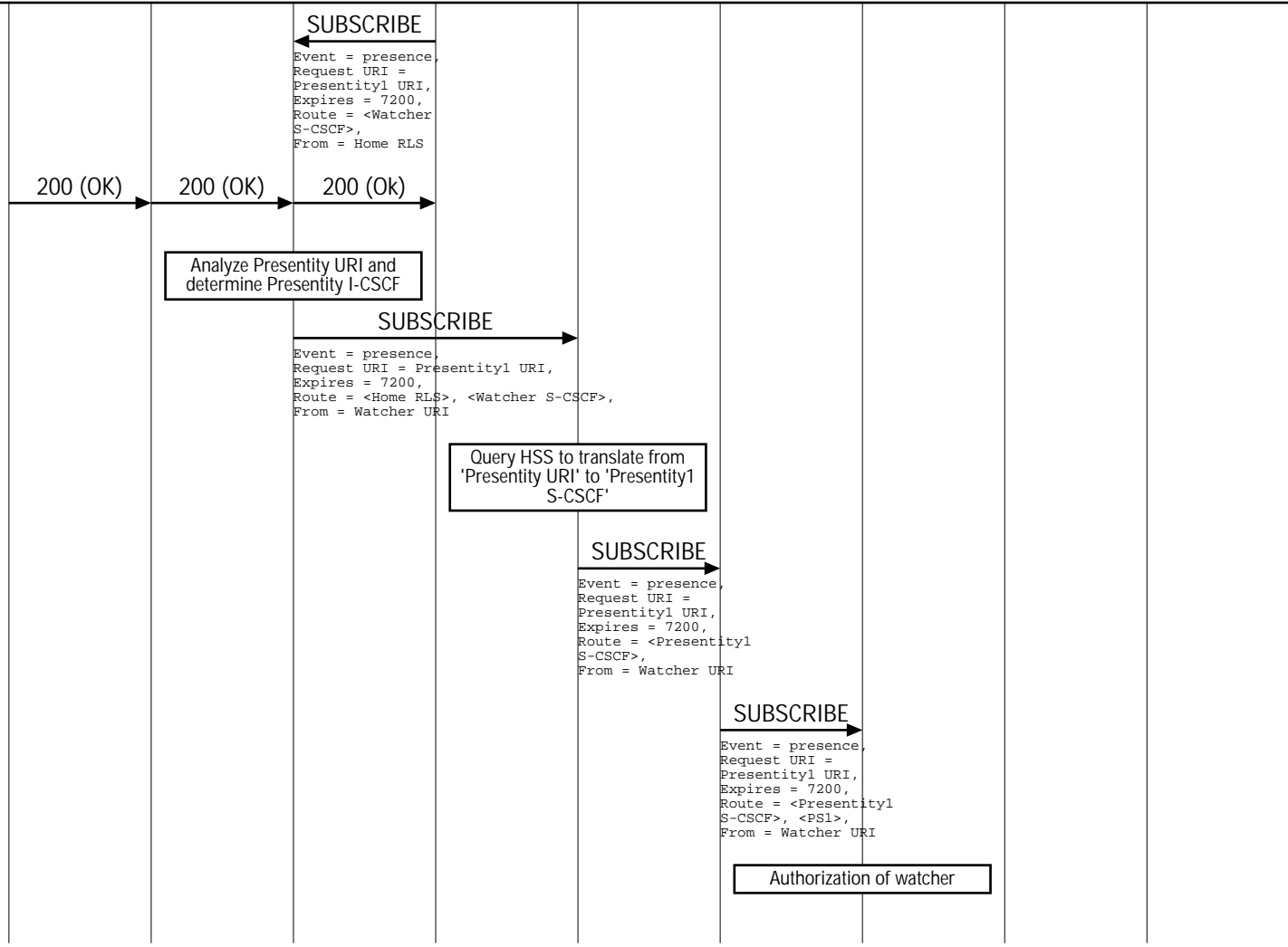
If all privacy conditions are met, PS sends a 200 (OK) response to the I-CSCF. 200 (OK) is passed all the way to Watcher.

Presence feature subscribing to Resource List (IMS Presence Subscription to a Resource List)										
Watcher UE	Watcher IMS Network			Presentity IMS Networks						EventStudio System Designer 4.0
Watcher User Equipment	Watcher Visited Network	Watcher Home Network		Presentity1 Home Network			Presentity2 Home Network			
Watcher	Watcher P-CSCF	Watcher S-CSCF	Resource List Server	Presentity1 I-CSCF	Presentity1 S-CSCF	Presence Server 1	Presentity2 I-CSCF	Presentity2 S-CSCF	Presence Server 2	12-Apr-08 09:28 (Page 2)



RLS generates a NOTIFY request including the subscription state as a result of the SUBSCRIBE request. The NOTIFY gets routed to the watching subscriber via the S-CSCF and P-CSCF.

Subscribe to the presence information of all the users on the resource list.



After the Home RLS responds to the SUBSCRIBE request from the UE, it generates the necessary SUBSCRIBE requests to the presentities present in the resource list.

The Watcher acknowledges the NOTIFY request with a 200 (OK) to the P-CSCF. The 200 (OK) is passed to RLS.

Watcher S-CSCF performs an analysis of the Presentity URI and forwards the SUBSCRIBE request directly to the Presence PUA1's home network's CSCF i.e. I-CSCF in the destination network.

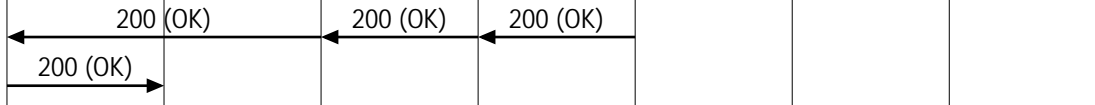
The Presentity I-CSCF sends a query to the HSS to find out the S-CSCF of the Presentity user. The HSS responds with the address of the current S-CSCF for the Presentity.

The Presentity1 I-CSCF forwards the SUBSCRIBE request to the Presentity1 S-CSCF that will handle the termination.

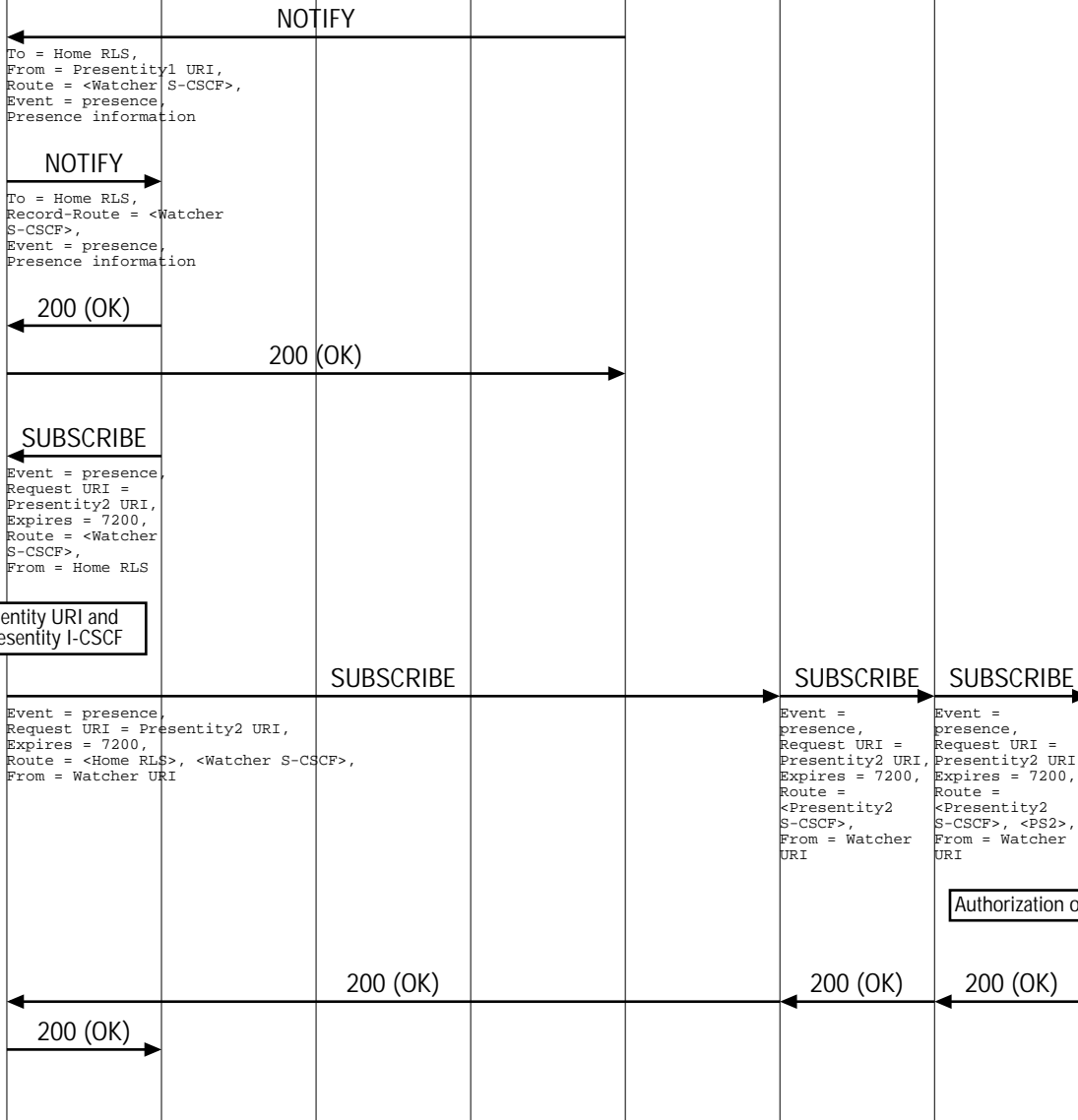
The S-CSCF forwards the SUBSCRIBE request to the PS.

The PS performs the necessary authorization checks on the Watcher to ensure it is allowed to watch the presentity.

Presence feature subscribing to Resource List (IMS Presence Subscription to a Resource List)										
Watcher UE	Watcher IMS Network			Presentity IMS Networks						EventStudio System Designer 4.0
Watcher User Equipment	Watcher Visited Network	Watcher Home Network		Presentity1 Home Network			Presentity2 Home Network			
Watcher	Watcher P-CSCF	Watcher S-CSCF	Resource List Server	Presentity1 I-CSCF	Presentity1 S-CSCF	Presence Server 1	Presentity2 I-CSCF	Presentity2 S-CSCF	Presence Server 2	12-Apr-08 09:28 (Page 3)



The PS1 detects that Presentity1's UE has been switched off which modifies its presence state information.



PS sends a NOTIFY request with the current state of the presentity's presence information that the watcher has subscribed and been authorized to.

The Watcher S-CSCF forwards NOTIFY to Home RLS.

The Home RLS generates a 200 (OK) response to the NOTIFY request. The message is passed to PS as shown.

The Resource List Server initiates a subscription request to the second user in the Resource List.

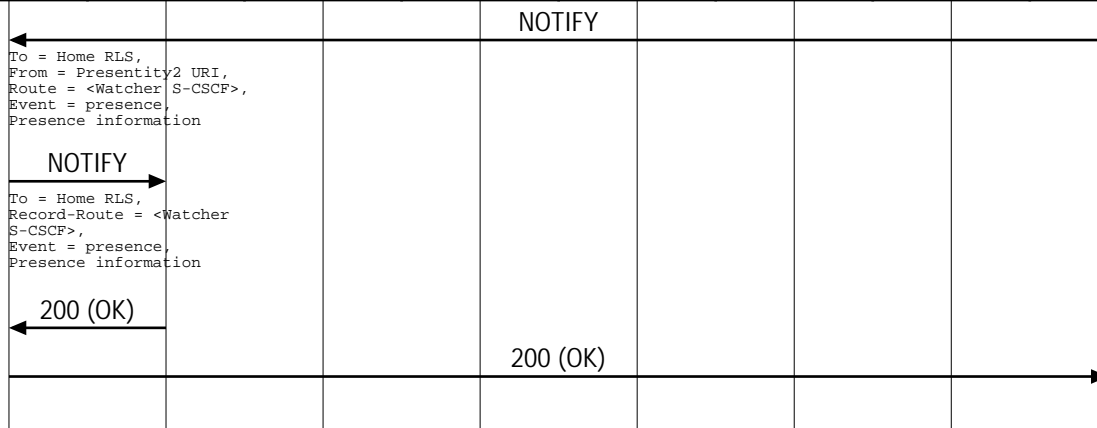
The PS performs the necessary authorization checks on the Watcher to ensure it is allowed to watch the presentity.

If all privacy conditions are met, PS sends a 200 (OK) response to the S-CSCF. 200 (OK) is passed all the way to Watcher.

Analyze Presentity URI and determine Presentity I-CSCF

Authorization of watcher

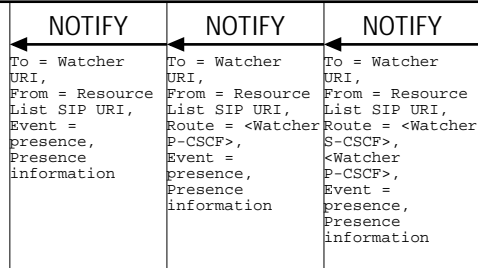
Presence feature subscribing to Resource List (IMS Presence Subscription to a Resource List)										
Watcher UE	Watcher IMS Network			Presentity IMS Networks						EventStudio System Designer 4.0
Watcher User Equipment	Watcher Visited Network	Watcher Home Network		Presentity1 Home Network			Presentity2 Home Network			
Watcher	Watcher P-CSCF	Watcher S-CSCF	Resource List Server	Presentity1 I-CSCF	Presentity1 S-CSCF	Presence Server 1	Presentity2 I-CSCF	Presentity2 S-CSCF	Presence Server 2	12-Apr-08 09:28 (Page 4)



The presence server for the second user generates a NOTIFY request to update the subscription status.

The Home RLS generates a 200 (OK) response to the NOTIFY request. The message is passed to PS as shown.

Collate the subscription responses and notify the Watcher UE



Update the presence information for all users in the NOTIFY message.

The Home RLS copies the body of the incoming NOTIFY request(s) into the body of the outgoing NOTIFY request to Watcher.

The Watcher acknowledges the NOTIFY request with a 200 (OK) to the P-CSCF. The 200 (OK) is passed to RLS.